

Cloudian HyperStore® appliances are built on a robust object storage platform that is engineered to manage massive amounts of unstructured data, with near-limitless scalability, geographic independence, and multi-tenancy.

With unique features like object streaming and policy-based tiering, data moves seamlessly between your on-premises cloud and Amazon S3 or Google Cloud, regardless of object size. This unique hybrid cloud ecosystem lets you leverage cloud infrastructure for long-term bulk storage while keeping your most business-critical data on-premises. Cloudian can also serve as a secondary on-premises backup target at a disaster recovery site.

HyperStore appliances are built for simplicity, density, and scale using commodity hardware. Each model is fully integrated with Cloudian HyperStore software to ensure limitless scalability, multi-data center storage and replication, fully automated data tiering to Amazon S3 or Google Cloud, and support for all Amazon S3 API applications — all behind your firewall.

- Start with as little as 48TB, scale to hundreds of petabytes
- Amazon S3 API compatible
- Dynamic data tiering to Amazon S3 and Google Cloud
- Protect data using replication, erasure coding, or both
- Grow to multiple data centers or regions
- Professional services and 24x7 support



## PRODUCT FEATURES

- Amazon S3 API compatible
- Built on commodity servers
- Policy-based tiering to Amazon S3 and Google Cloud
- Professional services, 24x7 support
- Single management view into on-prem and cloud storage

## USE CASES

- Hybrid cloud
- Backup and disaster recovery
- Long-term archival
- File sync and share
- Big Data analytics
- Remote file storage
- Content delivery network
- Storage-as-a-Service (STaaS)

Cloudian guarantees compatibility with all Amazon S3 API applications. [LEARN MORE >](#)

## HyperStore 1500 Appliance

- Ultra-dense 1U platform
- 12x hot-swappable 3.5" disk drives
- Up to 4x hot-swappable 2.5" SSDs
- 10Gbe networking



The innovative pull-out design of the 1U platform requires no external cable management arm, significantly reducing deployment time.

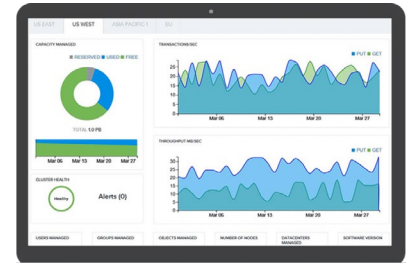
## HyperStore 4000 Appliance

- Ultra-dense 4U platform
- 2 nodes in 1 chassis
- 70x hot-swappable 3.5" disk drives (35 per node)
- Up to 4x hot-swappable 2.5" SSDs
- 10Gbe networking



## HyperStore 1500 Specifications

<b>Form Factor</b>	1U rack mount chassis
<b>Metadata Drives</b>	2x 480GB SSD
<b>Data Drives</b>	12 x 3.5" SAS HDD (7200RPM)
<b>Drive Sizes</b>	4TB, 8TB, 10TB
<b>Storage Capacity Raw</b>	48TB, 96TB, 120TB
<b>Data Protection</b>	Replication and erasure coding via storage policies
<b>Redundancy</b>	Hot swappable disk drives 2x hot swappable power supplies No single point of failure Non-disruptive online software upgrades
<b>CPU</b>	2x E5-2620 v4, 8 core
<b>Memory</b>	64GB
<b>Network Interfaces</b>	2x10Gbe (10BaseT or SFP+)
<b>Monitoring/Management</b>	CLI, GUI, API, IPMI, JMX
<b>Power Supply</b>	700W Platinum PSU, 1+1 Redundancy, 100- 240V AC
<b>Cooling</b>	(6) 40x56 dual rotor fans
<b>Dimensions</b>	17.6" x 1.7" x 35" 448.2mm x 43.2mm x 881mm
<b>IO Ports</b>	Front: (1) USB 2.0 port Rear: (2) USB 3.0 ports, (1) VGA port, (1) RS232 serial port (2) 1GbE RJ45 ports, (1) Gbe RJ45 management port
<b>Operating Environment</b>	Operating temperature: 5°C to 35°C (41°F to 95°F) Non-operating temperature: -40°C to 65°C (-40°F to 149°F) Operating relative humidity: 50% to 85%RH Non-operating relative humidity: 20% to 90%RH



**Cloudian Management Console**  
One window for configuring, managing, and monitoring.

## HyperStore 4000 Specifications

<b>Form Factor</b>	2 nodes in a 4U rack mount chassis
<b>Metadata Drives</b>	4x 800GB SSD (2 per node)
<b>Data Drives</b>	70x SAS HDD (35 per node, 7200RPM)
<b>Drive Sizes</b>	8TB, 10TB
<b>Storage Capacity Raw</b>	560TB / 700TB
<b>Data Protection</b>	Replication and erasure coding via storage policies
<b>Redundancy</b>	Hot-swappable disk drives 4x hot swappable power supplies No single point of failure Non-disruptive online software upgrades
<b>CPU</b>	4x E5-2620 v4, 8 core (2 per node)
<b>Memory</b>	256GB (128GB per node)
<b>Network Interfaces</b>	4x 10Gbe (2 per node)
<b>Monitoring/Management</b>	CLI, GUI, API, IPMI, JMX
<b>Power Supply</b>	1200W Platinum PSU, 2+2 redundancy, 100- 240V AC
<b>Cooling</b>	(4) 8056 + (1) 6056 dual-rotor fans
<b>Dimensions</b>	17.6" x 6.9" x 35.9" 447mm x 175.3mm x 912.2mm
<b>Weight</b>	130Kg / 287 lbs
<b>IO Ports</b>	Rear per node: (2) USB 3.0 ports; (1) VGA port; (2) RS232 serial ports; (2) GbE RJ45 ports; (1) GbE RJ45 management
<b>Operating Environment</b>	Operating temperature: 5°C to 35°C (41°F to 95°F) Non-operating temperature: -40°C to 65°C (-40°F to 149°F) Operating relative humidity: 50% to 85%RH Non-operating relative humidity: 20% to 90%RH



**Cloudian, Inc.**  
177 Bovet Road, Suite 450  
San Mateo, CA 94402  
Tel: 1.650.227.2380  
Email: [info@cloudian.com](mailto:info@cloudian.com)  
[www.cloudian.com](http://www.cloudian.com)

©2017 Cloudian, Inc. Cloudian, the Cloudian logo, and HyperStore are registered trademarks or trademarks of Cloudian, Inc. All other trademarks are property of their respective holders. DS-1540-0117